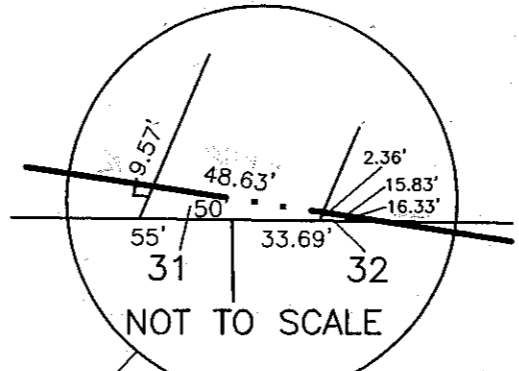
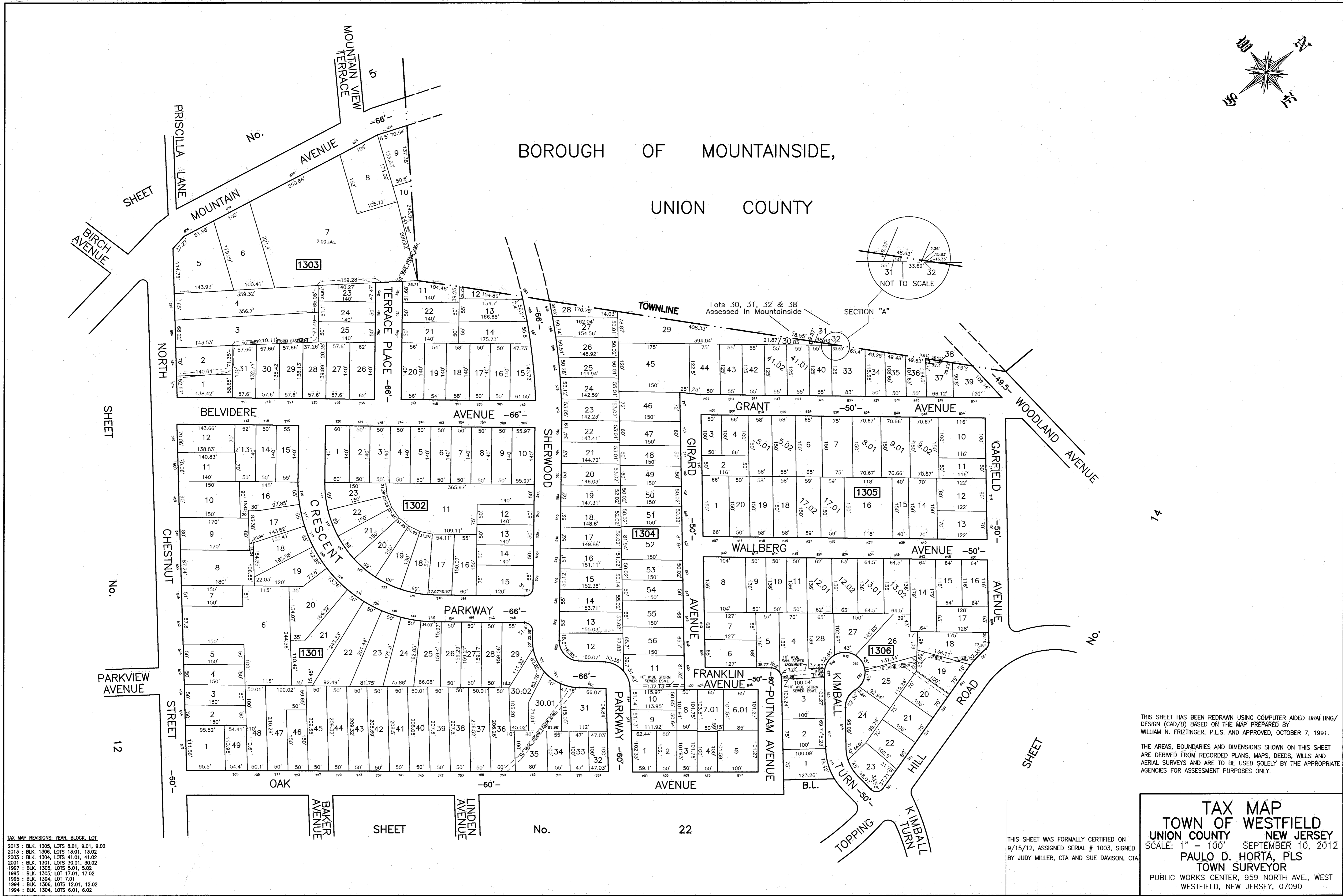


BOROUGH OF MOUNTAIN SIDE,
UNION COUNTY



Lots 30, 31, 32 & 38 Assessed in Mountainside

TAX MAP REVISIONS: YEAR, BLOCK, LOT
2013 : BLK. 1305, LOTS 8.01, 9.01, 9.02
2013 : BLK. 1306, LOTS 13.01, 13.02
2003 : BLK. 1304, LOTS 41.01, 41.02
2001 : BLK. 1301, LOTS 30.01, 30.02
1997 : BLK. 1305, LOTS 5.01, 5.02
1995 : BLK. 1305, LOTS 17.01, 17.02
1995 : BLK. 1304, LOT 7.01
1994 : BLK. 1306, LOTS 12.01, 12.02
1994 : BLK. 1304, LOTS 6.01, 6.02

THIS SHEET HAS BEEN REDRAWN USING COMPUTER AIDED DRAFTING/ DESIGN (CAD/D) BASED ON THE MAP PREPARED BY WILLIAM N. FRIZTINGER, P.L.S. AND APPROVED, OCTOBER 7, 1991.
THE AREAS, BOUNDARIES AND DIMENSIONS SHOWN ON THIS SHEET ARE DERIVED FROM RECORDED PLANS, MAPS, DEEDS, WILLS AND AERIAL SURVEYS AND ARE TO BE USED SOLELY BY THE APPROPRIATE AGENCIES FOR ASSESSMENT PURPOSES ONLY.

TAX MAP
TOWN OF WESTFIELD
UNION COUNTY **NEW JERSEY**
SCALE: 1" = 100' SEPTEMBER 10, 2012
PAULO D. HORTA, PLS
TOWN SURVEYOR
PUBLIC WORKS CENTER, 959 NORTH AVE., WEST
WESTFIELD, NEW JERSEY, 07090

THIS SHEET WAS FORMALLY CERTIFIED ON 9/15/12, ASSIGNED SERIAL # 1003, SIGNED BY JUDY MILLER, CTA AND SUE DAVISON, CTA