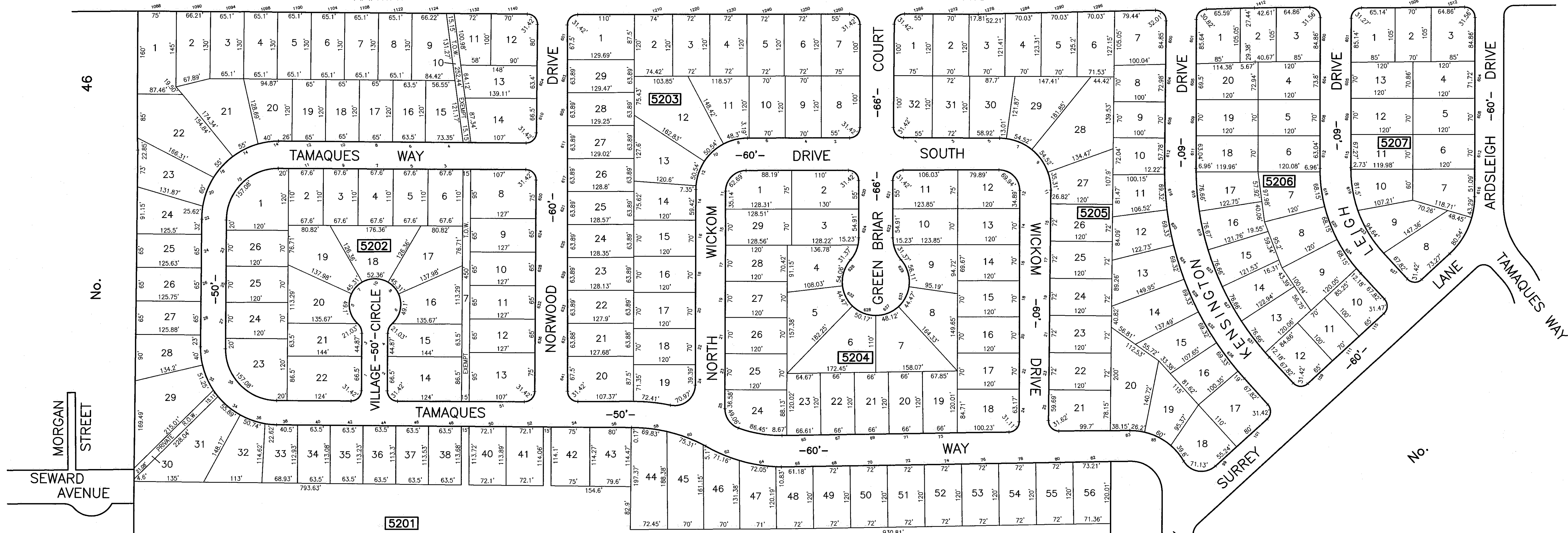




MOHAWK WAY SHEET No. 51  
 MONTAUK DRIVE SHEET No. 55  
 COTTAGE PLACE  
 FAULKNER DRIVE



MORGAN STREET  
 SEWARD AVENUE  
 DICKSON DRIVE

No. 46

Block LIMIT

Block LIMIT

SHEET

SHEET

27.44±Ac.  
 EXEMPT  
 57  
 TAMAQUES RESERVATION

No.

No.

53

54

THIS SHEET HAS BEEN REDRAWN USING COMPUTER AIDED DRAFTING/DESIGN (CAD/D) BASED ON THE MAP PREPARED BY WILLIAM N. FRITZINGER, P.L.S. AND APPROVED, OCTOBER 7, 1991.

THE AREAS, BOUNDARIES AND DIMENSIONS SHOWN ON THIS SHEET ARE DERIVED FROM RECORDED PLANS, MAPS, DEEDS, WILLS AND AERIAL SURVEYS AND ARE TO BE USED SOLELY BY THE APPROPRIATE AGENCIES FOR ASSESSMENT PURPOSES ONLY.

**TAX MAP**  
**TOWN OF WESTFIELD**  
**UNION COUNTY NEW JERSEY**  
 SCALE: 1" = 100' SEPTEMBER 10, 2012  
**PAULO D. HORTA, P.L.S.**  
**TOWN SURVEYOR**  
 PUBLIC WORKS CENTER, 959 NORTH AVE., WEST  
 WESTFIELD, NEW JERSEY, 07090

THIS SHEET WAS FORMALLY CERTIFIED ON 9/15/12, ASSIGNED SERIAL # 1003, SIGNED BY JUDY MILLER, CTA AND SUE DAVISON, CTA