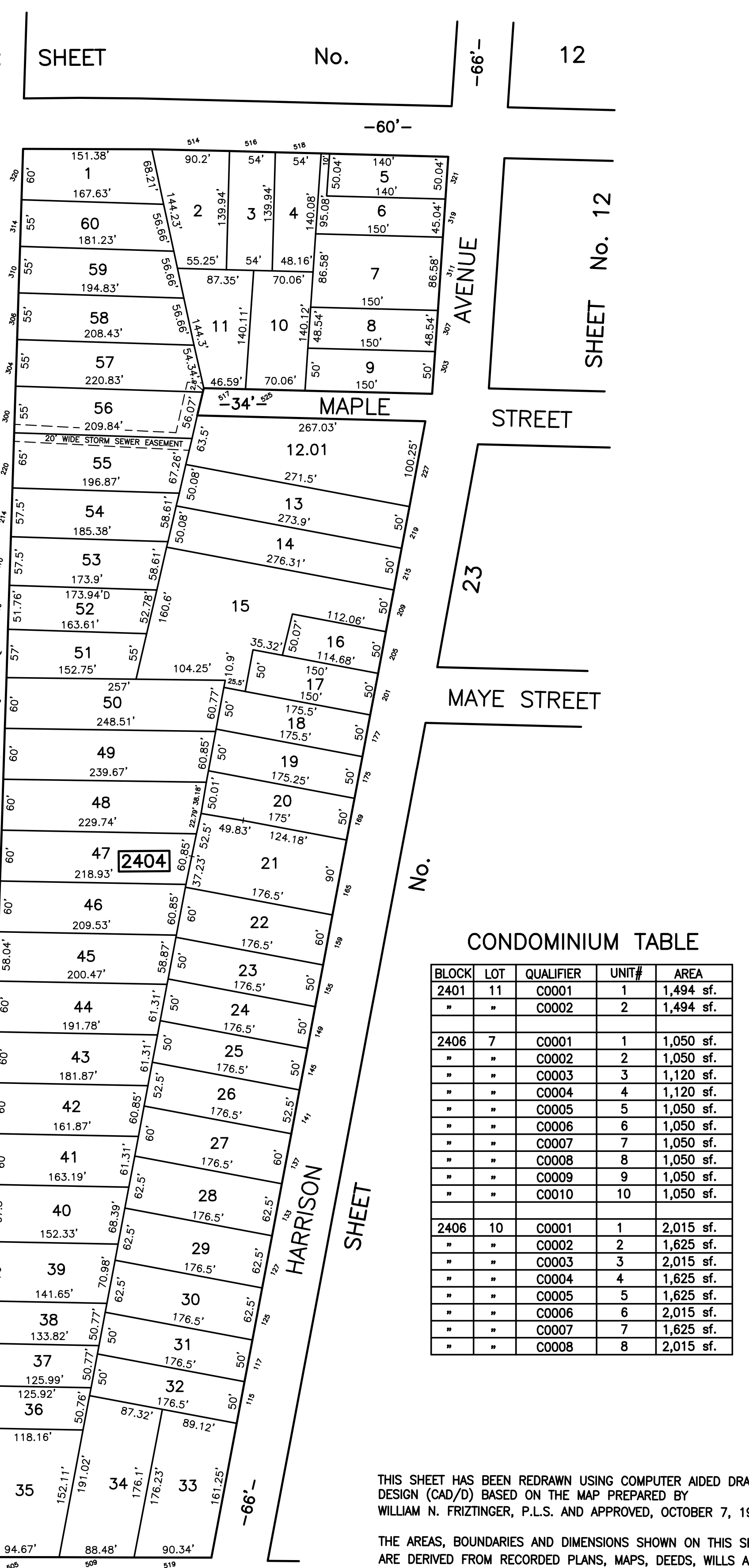
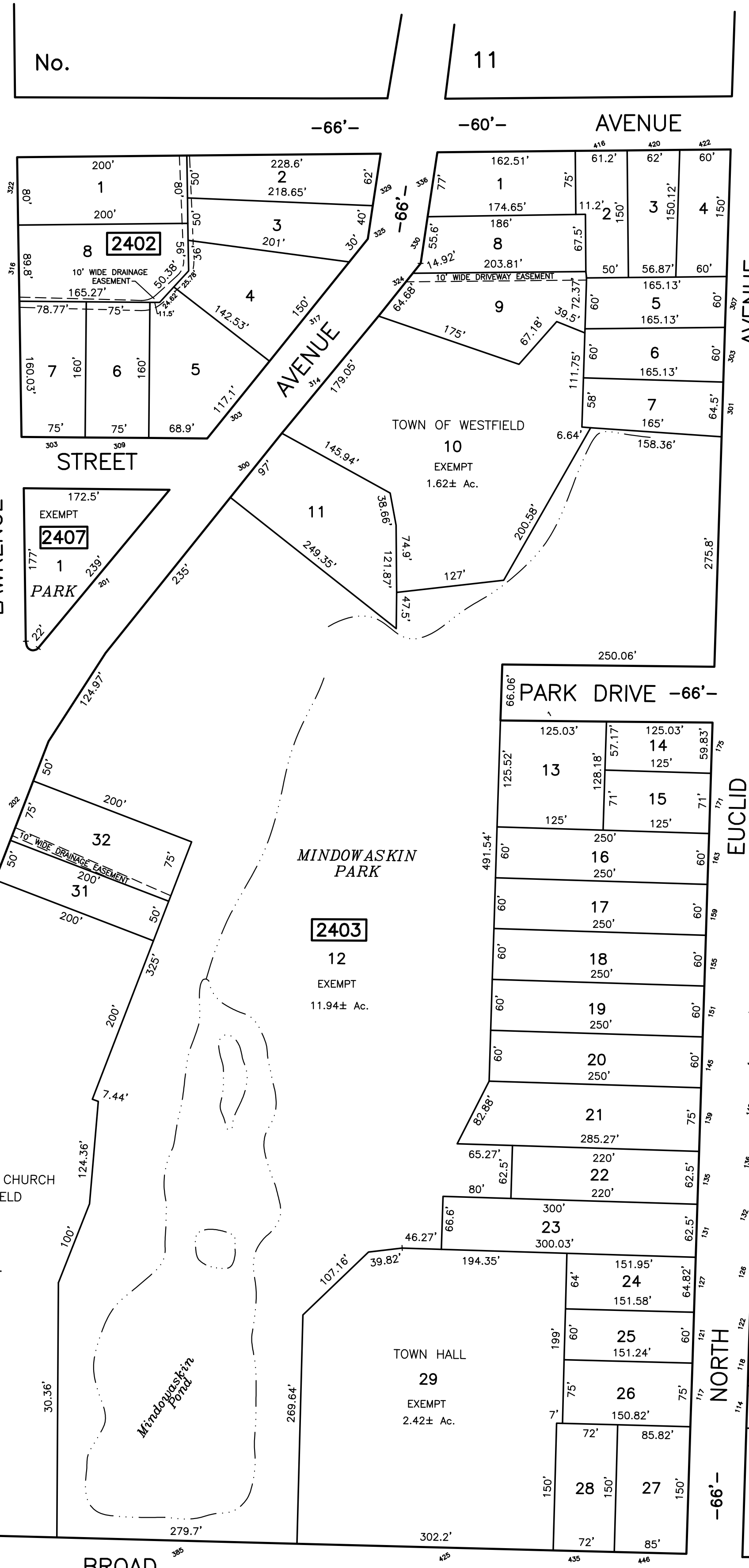




SHEET No. 10

COWPERTHWAIT PLACE

SHEET No. 25



CONDOMINIUM TABLE

| BLOCK | LOT | QUALIFIER | UNIT# | AREA |
|-------|-----|-----------|-------|-----------|
| 2401 | 11 | C0001 | 1 | 1,494 sf. |
| " | " | C0002 | 2 | 1,494 sf. |
| 2406 | 7 | C0001 | 1 | 1,050 sf. |
| " | " | C0002 | 2 | 1,050 sf. |
| " | " | C0003 | 3 | 1,120 sf. |
| " | " | C0004 | 4 | 1,120 sf. |
| " | " | C0005 | 5 | 1,050 sf. |
| " | " | C0006 | 6 | 1,050 sf. |
| " | " | C0007 | 7 | 1,050 sf. |
| " | " | C0008 | 8 | 1,050 sf. |
| " | " | C0009 | 9 | 1,050 sf. |
| " | " | C0010 | 10 | 1,050 sf. |
| 2406 | 10 | C0001 | 1 | 2,015 sf. |
| " | " | C0002 | 2 | 1,625 sf. |
| " | " | C0003 | 3 | 2,015 sf. |
| " | " | C0004 | 4 | 1,625 sf. |
| " | " | C0005 | 5 | 1,625 sf. |
| " | " | C0006 | 6 | 2,015 sf. |
| " | " | C0007 | 7 | 1,625 sf. |
| " | " | C0008 | 8 | 2,015 sf. |

THIS SHEET HAS BEEN REDRAWN USING COMPUTER AIDED DRAFTING/ DESIGN (CAD/D) BASED ON THE MAP PREPARED BY WILLIAM N. FRITZINGER, P.L.S. AND APPROVED, OCTOBER 7, 1991.

THE AREAS, BOUNDARIES AND DIMENSIONS SHOWN ON THIS SHEET ARE DERIVED FROM RECORDED PLANS, MAPS, DEEDS, WILLS AND AERIAL SURVEYS AND ARE TO BE USED SOLELY BY THE APPROPRIATE AGENCIES FOR ASSESSMENT PURPOSES ONLY.

TAX MAP REVISIONS: YEAR, BLOCK, LOT
2022 - BLK. 2405, LOTS 7.01, 7.02
2014 - BLK. 2401, LOT 11 (CONDOS)
2008 - BLK. 2404, LOT 12.01
1992 - BLK. 2406, LOT 7

TAX MAP
TOWN OF WESTFIELD
UNION COUNTY NEW JERSEY
SCALE: 1" = 100' SEPTEMBER 10, 2012
PAULO D. HORTA, PLS
TOWN SURVEYOR
PUBLIC WORKS CENTER, 959 NORTH AVE., WEST
WESTFIELD, NEW JERSEY, 07090

THIS SHEET WAS FORMALLY CERTIFIED ON 9/15/12, ASSIGNED SERIAL # 1003, SIGNED BY JUDY MILLER, CTA AND SUE DAVISON, CTA.